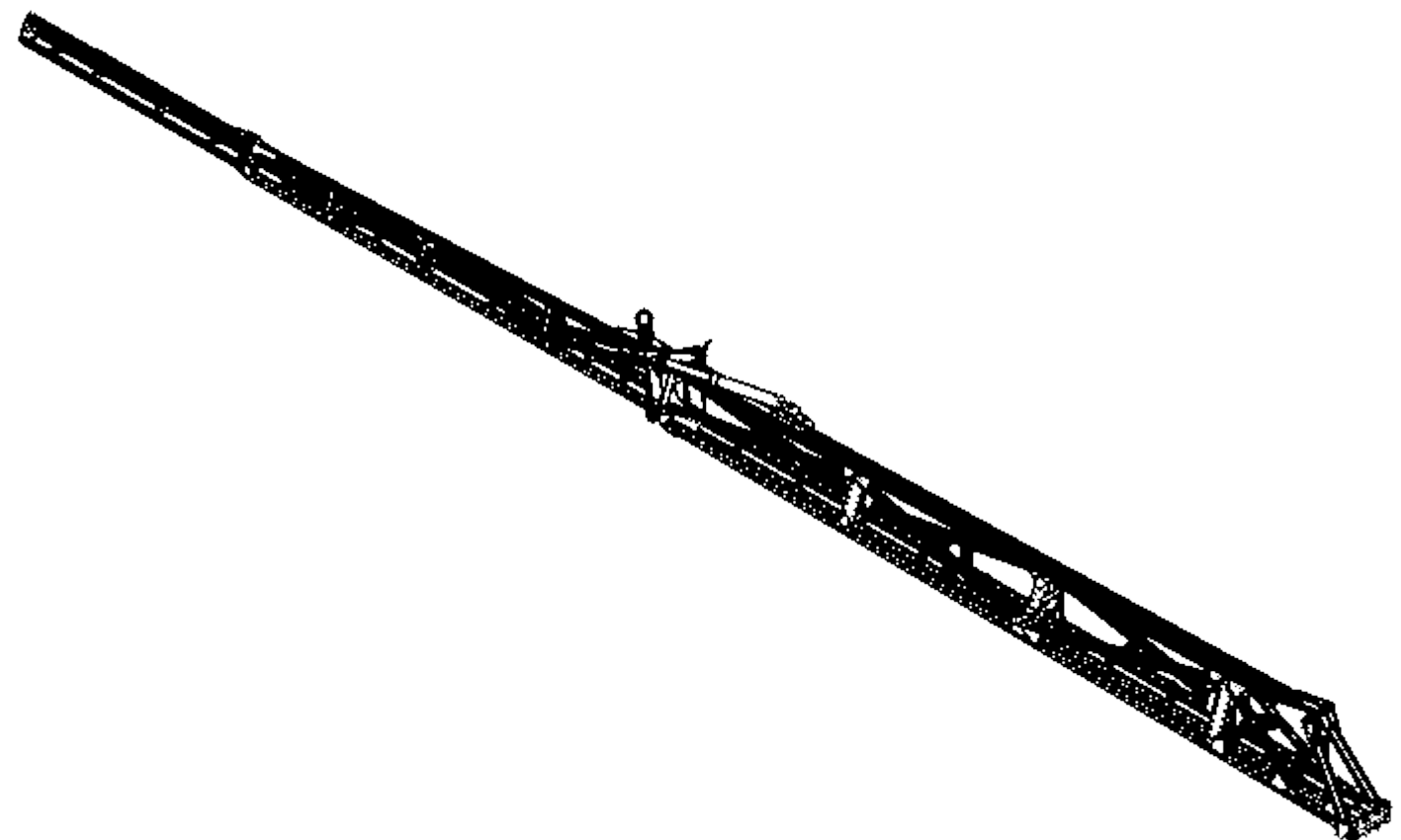


ITEM	PART NUMBER	Rev.	Description	QTY.
1	20-M120-300-RH	G	WELDMENT, PRIMARY BOOM, RH, M120	1
2	20-M120-2001-RH	C	WELDMENT, SECONDARY BOOM, RH, STANDARD, 6" WIDE, M120	1
3	20-M120-1000	C	WELDMENT, BREAKAWAY, STANDARD, (106") M120	1
4	20-M120-378-RH	A	WELDMENT, CYL PIVOT POCKET, RH, PRIMARY BOOM, M120	1
5	10-M120-3303	-	1.50 OD X 1.00 ID SHIM, STEEL	3
6	10-M120-394	A	PLATE, BRACKET, PLUMBING MOUNT, ADJUSTABLE, STANDARD	13
7	10-M120-452-LHB	A	PLUMBING MOUNT, BOLT ON, LH, BLACK	1
8	10-M90-715	A	BUSHING, SPACER, BOOM PIVOT ARM, PRIMARY BOOM, GEN-2, M-90	3
9	100C1300HCS8YZ		BOLT, 1"-8 x 13" x 2.25 HCS 8 YZ	1
10	100C450HCS8YZ		BOLT, 1"-8 x 4-1/2" x 2.25 HCS YZ G8	3
11	100C600HCS8YZ		BOLT, 1"-8 x 6 x 2.25 HCS YZ G8	3
12	100C700HCS8YZ		BOLT, 1"-8 x 7 x 2.25 HCS 8 YZ	1
13	100CNNE8YZ		NUT, NY-LOCK, 1"-8 UNC, YZ G8	8
14	100RWF8YZ		WASHER, FLAT, 1" SAE YZ G8	25
15	160939		BREAKAWAY SPRING, 2.0" OD x .38" DIA WIRE	1
16	25C125HCS8YZ	-	BOLT, 1/4-20 UNC x 1-1/4" x .75" GR8 YZ	13
17	25CNNE8YZ		NUT, NY-LOCK, 1/4-20 UNC, YZ	13
18	25RWF8YZ		WASHER, FLAT, 1/4 SAE GR8 YZ	26
19	30-BA-6002	B	HS ROD END ASSY, 1.0 ID X 1-1/4"-12 THD ROD	2
20	30-BA-6005	-	THREADED ROD ASSEMBLY, BREAKAWAY SPRING, BLACK PAINT	1
21	30-M120-6000-RH	C	ASSY, BOOM REST BRACKET-G2, RH, OUTWARD FACING	1
22	30-M120-AB101	C	"A" FRAME ASSEMBLY WITH ROD ENDS	1
23	30-M120-AB409R	C	ASSEMBLY, CYL PIVOT ARM, RH, M120	1
24	30-M120-AB411A	B	SWING ARM CON. ROD ASSEMBLY	1
25	37C150HCS8YZ	-	BOLT, 3/8-16 x 1-1/2" x 1.0 HCS GR8 YZ	1
26	37CNNE8YZ		NUT, NY-LOCK, 3/8-16 UNC, YZ G8	1
27	37RWF8YZ		WASHER, FLAT, 3/8 SAE G8 YZ	2
28	50-BA-9000	A	HOSE LOOP KIT, 1" TO 1-1/4" MOUNT, 4"	2
29	50C150HCS8YZ		BOLT, 1/2-13 x 1-1/2" x 1.25 HCS YZ G8	7
30	50CNNE8YZ		NUT, NY-LOCK, 1/2-13 UNC, YZ G8	7
31	50RWF8YZ		WASHER, FLAT, 1/2 SAE YZ G8	14
32	62C200HCS8YZ		BOLT, 5/8-11 x 2" x 1.50 HCS GR8 YZ	2
33	62C250HCS8YZ		BOLT, 5/8-11 x 2-1/2" x 1.50 HCS YZ G8	8
34	62CNNE8YZ	-	NUT, NY-LOCK, 5/8-11 UNC, YZ G8	10
35	62RWF8YZ	-	WASHER, FLAT, 5/8 SAE GR8 YZ	24
36	6381K45		SLEEVE BEARING, CAST BRONZE, .50" O.D. X .38" ID X .50" SHAFT	1
37	73910		CAP SCREW, 5/16-18 x 1-1/2", FLAT SOCKET HEAD, 18-8 SS	5
38	87C450BTA8YZ		BOLT, 7/8-9 x 4-1/2" FT HCS YZ G8	2
39	87CNFJ8YZ		NUT, JAM, HEX, 7/8-9 UNC, GR 8 YZ	2
40	AB345	A	RUB BLOCK, FRONT, SWING ARM	1
41	AB346	A	RUB BLOCK, REAR, SWING ARM	1
42	AB385	A	BUMPER STOP ASSY, SECONDARY TO BOOM	1
43	AB419-RH	A	PLUMBING SHROUD PLATE, RH	1
44	C47-002-38		CABLE ASSEMBLY, BREAKAWAY TO SPRING	1
45	C660		HYDRAULIC CYLINDER, RH, BOOM FOLD, M120	1
46	GF-0.25UNF-BA		GREASE FITTING, 1/4-28 UNF	2
47	H-98126A706		SHIM, 1.50" OD x 1.0" ID x 0.05" THK	1

INDEX	
BOOM ASSY	PAGE 2
PRIMARY BOOM ATTACHMENT	PAGE 3
PRIMARY BOOM PADS	PAGE 4
SECONDARY BOOM ATTACHMENT	PAGE 5
SECONDARY BOOM ROD END ASSYS	PAGE 6
BREAKAWAY ASSEMBLY	PAGE 7
JD ADDENDUM FOR CENTER RACK	PAGE 8



COMPONENTS REQD. FOR LEFT HAND BOOM ASSY

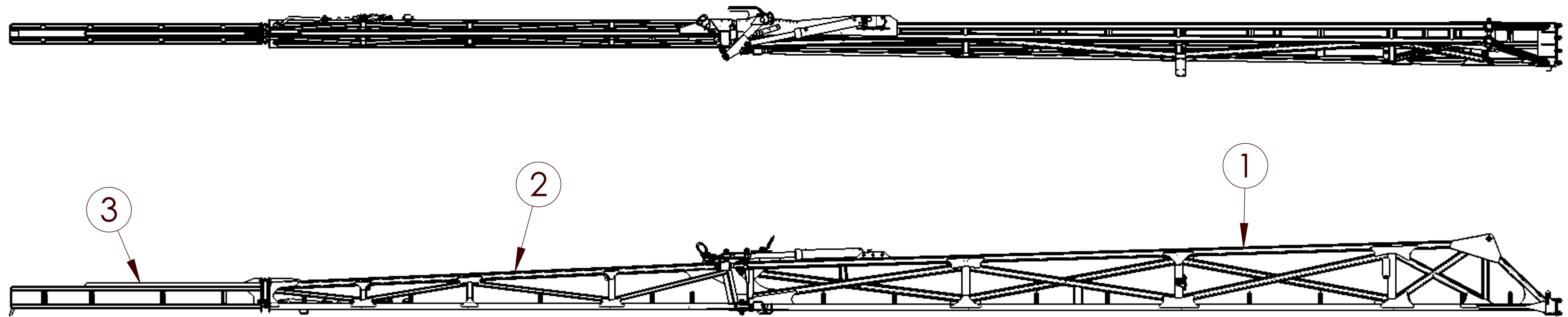
ITEM	PART NUMBER	Rev.	Description
1	20-M120-300-LH	F	WELDMENT, PRIMARY BOOM, LH, M120
2	20-M120-2001-LH	A	WELDMENT, SECONDARY BOOM, LH, STANDARD, 6" WIDE, M120
4	20-M120-378-LH	A	WELDMENT, CYL PIVOT POCKET, LH, PRIMARY BOOM, M120
7	10-M120-452-RH	A	PLUMBING MOUNT, BOLT ON, RH, BLACK
21	30-M120-6000-LH	C	ASSY, BOOM REST BRACKET-G2, LH, OUTWARD FACING
23	30-M120-AB409L	C	ASSEMBLY, CYL PIVOT ARM, LH, M120
43	AB419-LH	A	PLUMBING SHROUD PLATE, LH

**NOZZLE CONFIGURATIONS:
15N, 20F, 30F, 30N, 60N**

PROPRIETARY AND CONFIDENTIAL
THE INFORMATION CONTAINED IN THIS DRAWING IS THE SOLE PROPERTY OF **SPIRIT IMPLEMENTS LLC**. ANY REPRODUCTION IN PART OR AS A WHOLE WITHOUT THE WRITTEN PERMISSION OF **SPIRIT IMPLEMENTS LLC** IS PROHIBITED.

UNLESS OTHERWISE SPECIFIED: DIMENSIONS ARE IN INCHES TOLERANCES: FRACTIONAL ±1/16 ANGULAR: MACH ±0.1° BEND ±0.5° TWO PLACE DECIMAL ±.06 THREE PLACE DECIMAL ±.015 INTERPRET GEOMETRIC TOLERANCING PER: MATERIAL	NAME	DATE	TITLE: 120FT BOOM, TOP ASSEMBLY, RH	SIZE C	DWG. NO. 50-M120-500RH	REV D
DO NOT SCALE DRAWING	DRAWN			SCALE: 1:65	WEIGHT: 963.85	SHEET 1 OF 8
	CHECKED					
	ENG APPR.					
	MFG APPR.					
	Q.A.					
	COMMENTS:					

BOOM ASSEMBLY

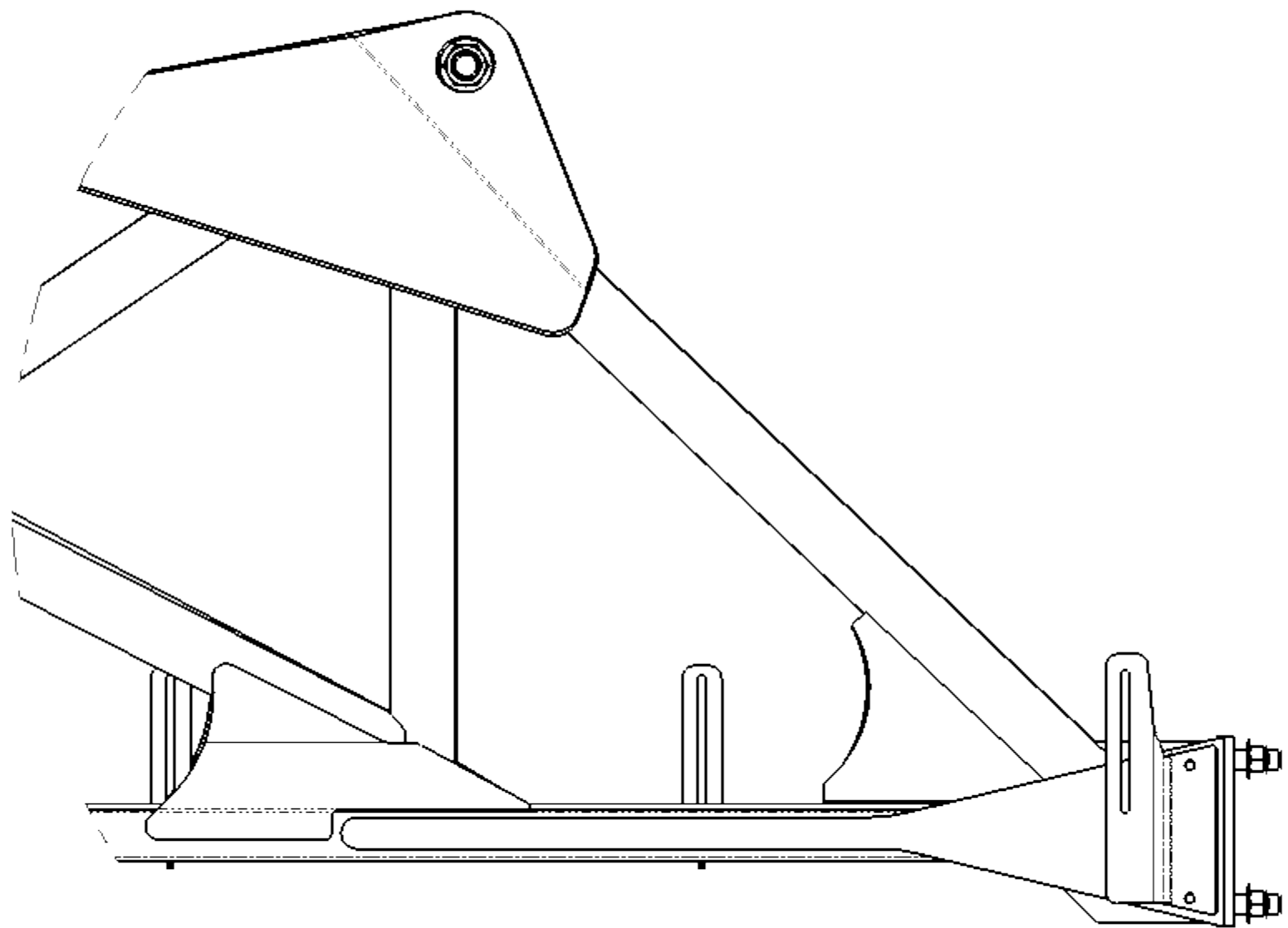
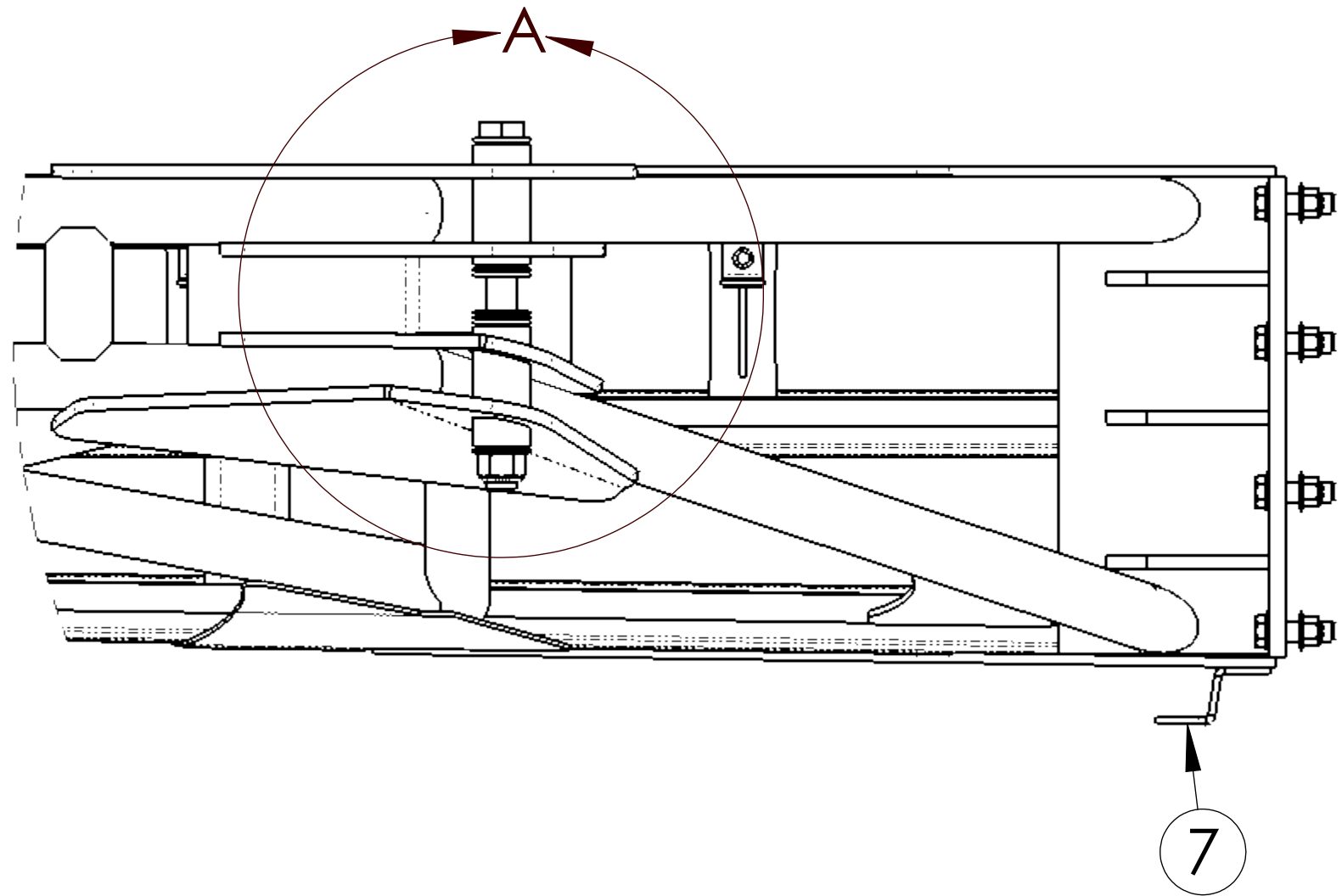


ITEM	PART NUMBER	Rev.	Description	QTY.
47	H-98126A706		SHIM, 1.50" OD x 1.0" ID x 0.05" THK	1
46	GF-0.25UNF-BA		GREASE FITTING, 1/4-28 UNF	2
45	C660		HYDRAULIC CYLINDER, RH, BOOM FOLD, M120	1
44	C47-002-38		CABLE ASSEMBLY, BREAKAWAY TO SPRING	1
43	AB419-RH	A	PLUMBING SHROUD PLATE, RH	1
42	AB385	A	BUMPER STOP ASSY, SECONDARY TO BOOM	1
41	AB346	A	RUB BLOCK, REAR, SWING ARM	1
40	AB345	A	RUB BLOCK, FRONT, SWING ARM	1
39	87CNFJ8YZ		NUT, JAM, HEX, 7/8-9 UNC, GR 8 YZ	2
38	87C450BTA8YZ		BOLT, 7/8-9 x 4-1/2" FT HCS YZ G8	2
37	73910		CAP SCREW, 5/16-18 x 1-1/2", FLAT SOCKET HEAD, 18-8 SS	5
36	6381K45		SLEEVE BEARING, CAST BRONZE, .50" O.D. X .38" ID X .50" SHAFT	1
35	62RWF8YZ	-	WASHER, FLAT, 5/8 SAE GR8 YZ	24
34	62CNNE8YZ	-	NUT, NY-LOCK, 5/8-11 UNC, YZ G8	10
33	62C250HCS8YZ		BOLT, 5/8-11 x 2-1/2" x 1.50 HCS YZ G8	8
32	62C200HCS8YZ		BOLT, 5/8-11 x 2" x 1.50 HCS GR8 YZ	2
31	50RWF8YZ		WASHER, FLAT, 1/2 SAE YZ G8	14

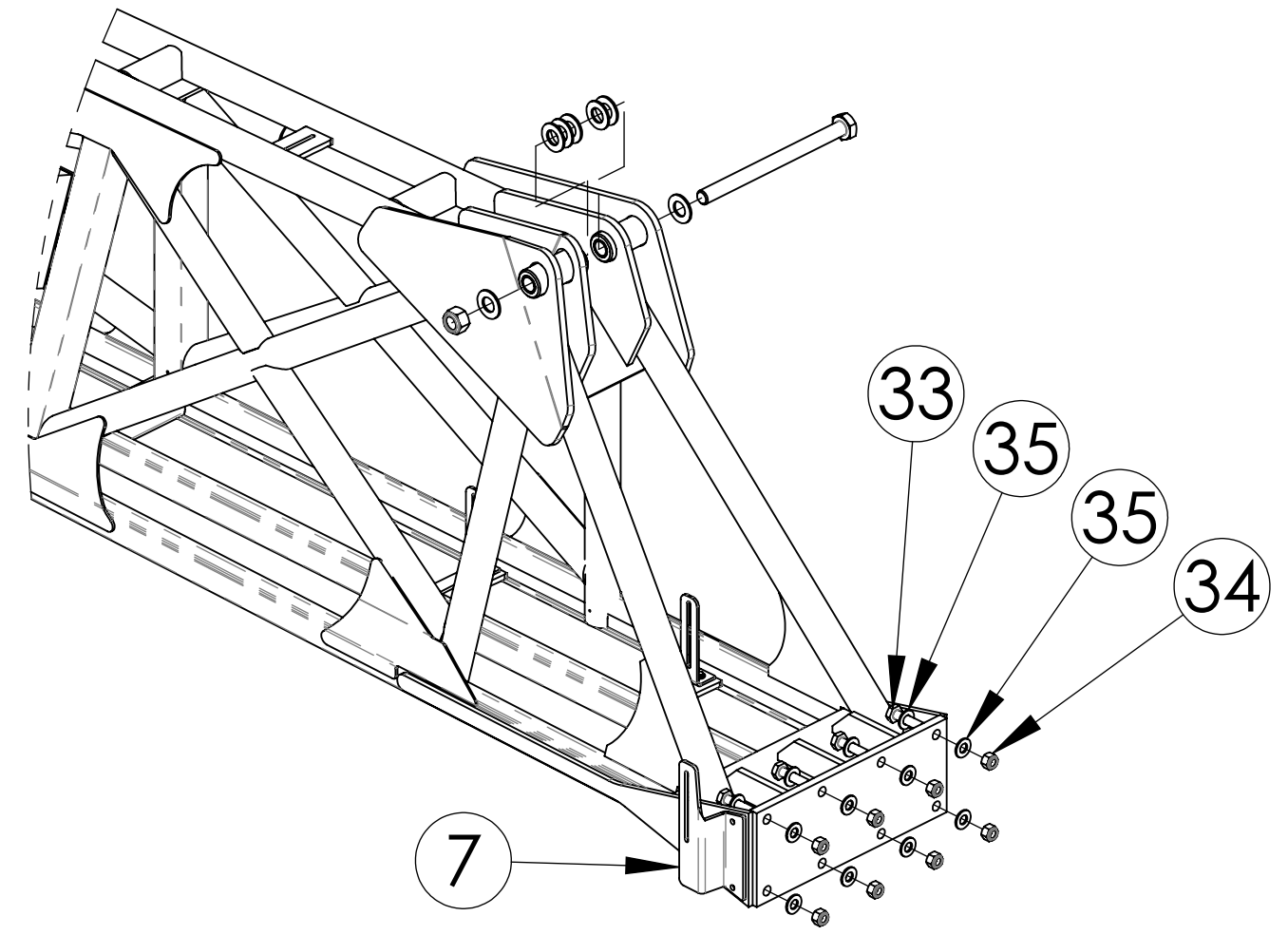
30	50CNNE8YZ		NUT, NY-LOCK, 1/2-13 UNC, YZ G8	7
29	50C150HCS8YZ		BOLT, 1/2-13 x 1-1/2" x 1.25 HCS YZ G8	7
28	50-BA-9000	A	HOSE LOOP KIT, 1" TO 1-1/4" MOUNT, 4"	2
27	37RWF8YZ		WASHER, FLAT, 3/8 SAE G8 YZ	2
26	37CNNE8YZ		NUT, NY-LOCK, 3/8-16 UNC, YZ G8	1
25	37C150HCS8YZ	-	BOLT, 3/8-16 x 1-1/2" x 1.0 HCS GR8 YZ	1
24	30-M120-AB411A	B	SWING ARM CON. ROD ASSEMBLY	1
23	30-M120-AB409R	C	ASSEMBLY, CYL PIVOT ARM, RH, M120	1
22	30-M120-AB101	C	"A" FRAME ASSEMBLY WITH ROD ENDS	1
21	30-M120-6000-RH	C	ASSY, BOOM REST BRACKET-G2, RH, OUTWARD FACING	1
20	30-BA-6005	-	THREADED ROD ASSEMBLY, BREAKAWAY SPRING, BLACK PAINT	1
19	30-BA-6002	B	HS ROD END ASSY, 1.0 ID X 1-1/4"-12 THD ROD	2
18	25RWF8YZ		WASHER, FLAT, 1/4 SAE GR8 YZ	26
17	25CNNE8YZ		NUT, NY-LOCK, 1/4-20 UNC, YZ	13
16	25C125HCS8YZ	-	BOLT, 1/4-20 UNC x 1-1/4" x .75" GR8 YZ	13
15	160939		BREAKAWAY SPRING, 2.0" OD x .38" DIA WIRE	1
14	100RWF8YZ		WASHER, FLAT, 1" SAE YZ G8	25
13	100CNNE8YZ		NUT, NY-LOCK, 1"-8 UNC, YZ G8	8
12	100C700HCS8YZ		BOLT, 1"-8 x 7 x 2.25 HCS 8 YZ	1
11	100C600HCS8YZ		BOLT, 1"-8 x 6 x 2.25 HCS YZ G8	3
10	100C450HCS8YZ		BOLT, 1"-8 x 4-1/2" x 2.25 HCS YZ G8	3
9	100C1300HCS8YZ		BOLT, 1"-8 x 13" x 2.25 HCS 8 YZ	1
8	10-M90-715	A	BUSHING, SPACER, BOOM PIVOT ARM, PRIMARY BOOM, GEN-2, M-90	3
7	10-M120-452-LHB	A	PLUMBING MOUNT, BOLT ON, LH, BLACK	1
6	10-M120-394	A	PLATE, BRACKET, PLUMBING MOUNT, ADJUSTABLE, STANDARD	13
5	10-M120-3303	-	1.50 OD X 1.00 ID SHIM, STEEL	3
4	20-M120-378-RH	A	WELDMENT, CYL PIVOT POCKET, RH, PRIMARY BOOM, M120	1
3	20-M120-1000	C	WELDMENT, BREAKAWAY, STANDARD, (106") M120	1
2	20-M120-2001-RH	C	WELDMENT, SECONDARY BOOM, RH, STANDARD, 6" WIDE, M120	1
1	20-M120-300-RH	G	WELDMENT, PRIMARY BOOM, RH, M120	1

ITEM	PART NUMBER	Rev.	Description	QTY.	ITEM	PART NUMBER	Rev.	Description	QTY.														
					<p>UNLESS OTHERWISE SPECIFIED: DIMENSIONS ARE IN INCHES TOLERANCES: FRACTIONAL ±1/16 ANGULAR: MACH ±0.1° BEND ±0.5° TWO PLACE DECIMAL ±.06 THREE PLACE DECIMAL ±.015 INTERPRET GEOMETRIC TOLERANCING PER: MATERIAL</p>																		
					<p>PROPRIETARY AND CONFIDENTIAL THE INFORMATION CONTAINED IN THIS DRAWING IS THE SOLE PROPERTY OF SPIRIT IMPLEMENTS LLC. ANY REPRODUCTION IN PART OR AS A WHOLE WITHOUT THE WRITTEN PERMISSION OF SPIRIT IMPLEMENTS LLC IS PROHIBITED.</p>																		
					<p>DO NOT SCALE DRAWING</p>																		
					<table border="1"> <thead> <tr> <th>NAME</th> <th>DATE</th> </tr> </thead> <tbody> <tr><td>DRAWN</td><td></td></tr> <tr><td>CHECKED</td><td></td></tr> <tr><td>ENG APPR.</td><td></td></tr> <tr><td>MFG APPR.</td><td></td></tr> <tr><td>Q.A.</td><td></td></tr> <tr><td>COMMENTS:</td><td></td></tr> </tbody> </table>					NAME	DATE	DRAWN		CHECKED		ENG APPR.		MFG APPR.		Q.A.		COMMENTS:	
NAME	DATE																						
DRAWN																							
CHECKED																							
ENG APPR.																							
MFG APPR.																							
Q.A.																							
COMMENTS:																							
					<p>TITLE: 120FT BOOM, TOP ASSEMBLY, RH</p>																		
					<table border="1"> <thead> <tr> <th>SIZE</th> <th>DWG. NO.</th> <th>REV</th> </tr> </thead> <tbody> <tr> <td>C</td> <td>50-M120-500RH</td> <td>D</td> </tr> </tbody> </table>					SIZE	DWG. NO.	REV	C	50-M120-500RH	D								
SIZE	DWG. NO.	REV																					
C	50-M120-500RH	D																					
					<table border="1"> <thead> <tr> <th>SCALE</th> <th>WEIGHT</th> <th>SHEET</th> </tr> </thead> <tbody> <tr> <td>1:36</td> <td>963.85</td> <td>2 OF 8</td> </tr> </tbody> </table>					SCALE	WEIGHT	SHEET	1:36	963.85	2 OF 8								
SCALE	WEIGHT	SHEET																					
1:36	963.85	2 OF 8																					

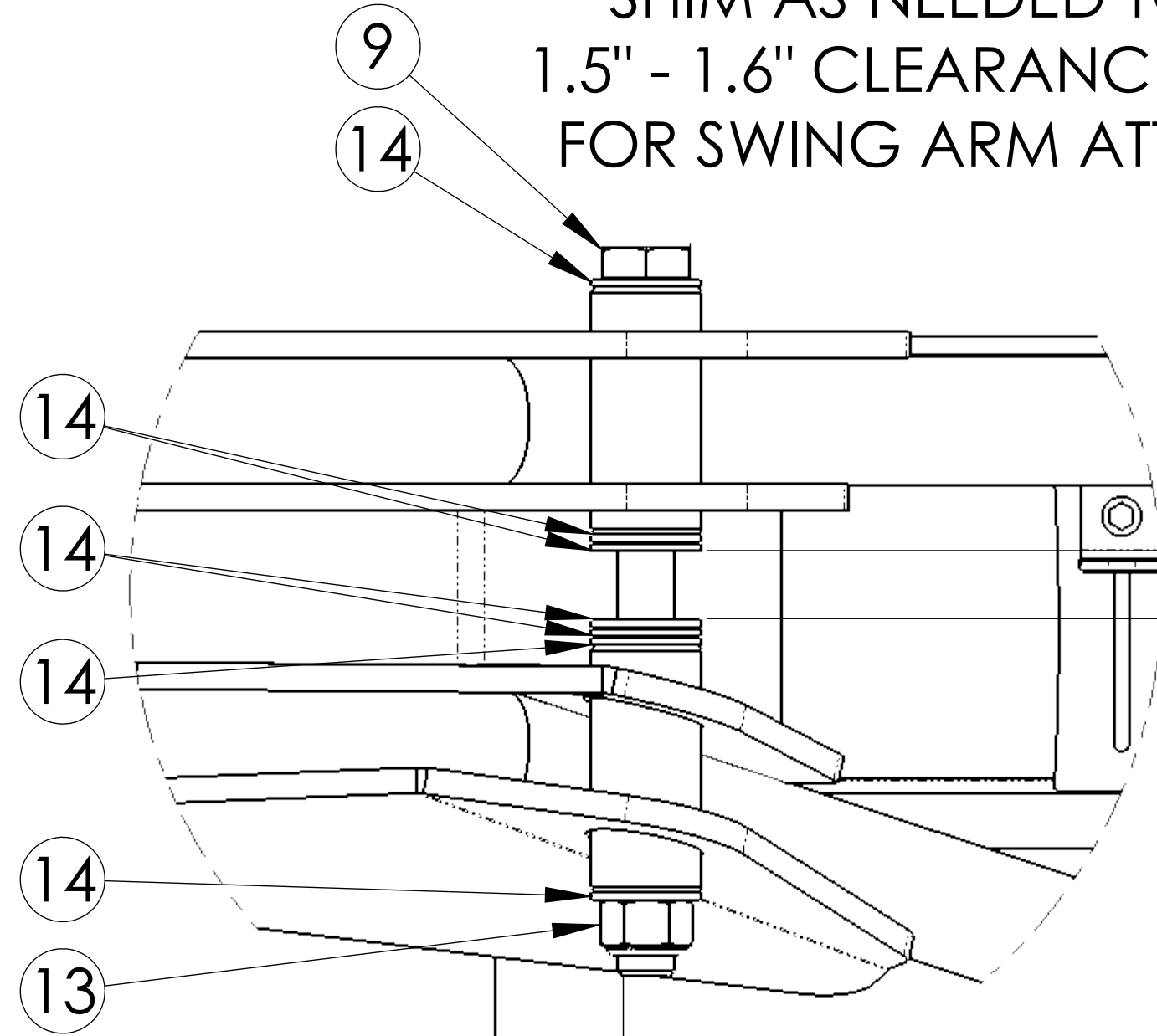
ITEM	PART NUMBER	Rev.	Description	QTY.
1	20-M120-300-RH	G	WELDMENT, PRIMARY BOOM, RH, M120	1
7	10-M120-452-LHB	A	PLUMBING MOUNT, BOLT ON, LH, BLACK	1
9	100C1300HCS8YZ		BOLT, 1"-8 x 13" x 2.25 HCS 8 YZ	1
13	100CNNE8YZ		NUT, NY-LOCK, 1"-8 UNC, YZ G8	8
14	100RWF8YZ		WASHER, FLAT, 1" SAE YZ G8	25
33	62C250HCS8YZ		BOLT, 5/8-11 x 2-1/2" x 1.50 HCS YZ G8	8
34	62CNNE8YZ	-	NUT, NY-LOCK, 5/8-11 UNC, YZ G8	10
35	62RWF8YZ	-	WASHER, FLAT, 5/8 SAE GR8 YZ	24



PRIMARY BOOM ATTACHMENT



SHIM AS NEEDED TO OBTAIN 1.5" - 1.6" CLEARANCE, CENTERED FOR SWING ARM ATTACHMENT.



DETAIL A
SCALE 1 : 3

PROPRIETARY AND CONFIDENTIAL
THE INFORMATION CONTAINED IN THIS DRAWING IS THE SOLE PROPERTY OF **SPIRIT IMPLEMENTS LLC**. ANY REPRODUCTION IN PART OR AS A WHOLE WITHOUT THE WRITTEN PERMISSION OF **SPIRIT IMPLEMENTS LLC** IS PROHIBITED.

UNLESS OTHERWISE SPECIFIED:
DIMENSIONS ARE IN INCHES
TOLERANCES:
FRACTIONAL ±1/16
ANGULAR: MACH ±0.1° BEND ±0.5°
TWO PLACE DECIMAL ±.06
THREE PLACE DECIMAL ±.015
INTERPRET GEOMETRIC TOLERANCING PER:
MATERIAL
DO NOT SCALE DRAWING

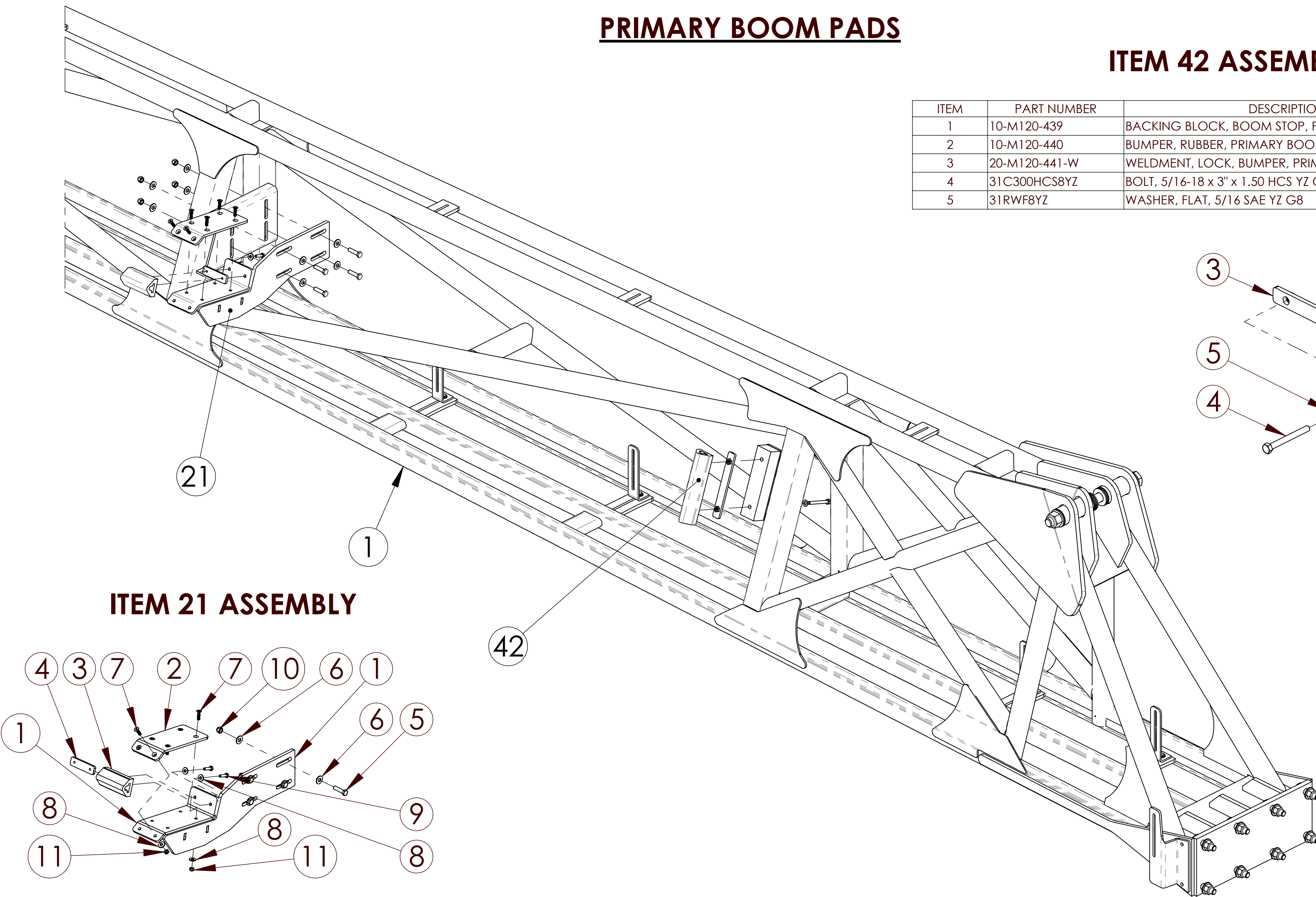
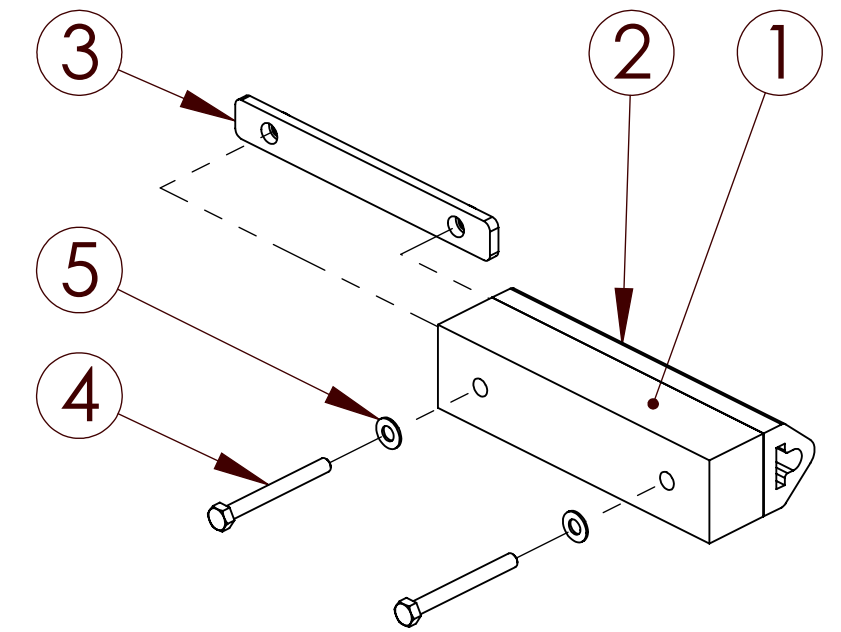
NAME	DATE
DRAWN	
CHECKED	
ENG APPR.	
MFG APPR.	
Q.A.	
COMMENTS:	

TITLE: 120FT BOOM, TOP ASSEMBLY, RH		
SIZE C	DWG. NO. 50-M120-500RH	REV D
SCALE: 1:96	WEIGHT: 963.85	SHEET 3 OF 8

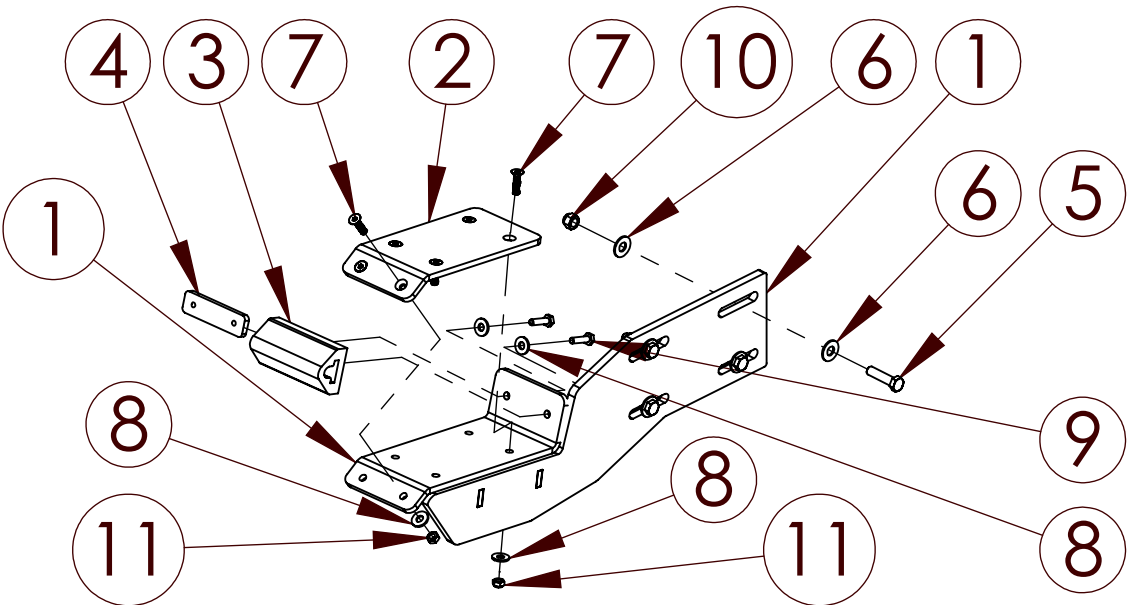
PRIMARY BOOM PADS

ITEM 42 ASSEMBLY

ITEM	PART NUMBER	DESCRIPTION	QTY.
1	10-M120-439	BACKING BLOCK, BOOM STOP, PRIMARY BOOM, M120	1
2	10-M120-440	BUMPER, RUBBER, PRIMARY BOOM, M120	1
3	20-M120-441-W	WELDMENT, LOCK, BUMPER, PRIMARY BOOM, M120	1
4	31C300HCS8YZ	BOLT, 5/16-18 x 3" x 1.50 HCS YZ G8	2
5	31RWF8YZ	WASHER, FLAT, 5/16 SAE YZ G8	2



ITEM 21 ASSEMBLY



ITEM	PART NUMBER	DESCRIPTION	QTY.
1	20-M120-3007-RH	WELDMENT, BOOM REST BRKT, GEN-2, RH, OUTWARD FACING	1
2	10-M120-306	ARM BRACKET SHELF PAD	1
3	10-M120-443	ARM BRACKET SHELF BUMPER (SEAT STOP)	1
4	10-M120-442	PLATE, LOCK, ARM BRKT SHELF BUMPER, M120	1
5	37C150HCS8YZ	BOLT, 3/8-16 x 1-1/2" x 1.0 HCS GR8 YZ	4
6	37RWF8YZ	WASHER, FLAT, 3/8 SAE G8 YZ	8
7	73898	CAP SCREW, 1/4-28 x 1", FLAT SOCKET HEAD, 18-8 SS	6
8	25RWF8YZ	WASHER, FLAT, 1/4 SAE GR8 YZ	8
9	25F100HCS8YZ	BOLT, 1/4-28 UNF x 1" HCS GR8 YZ	2
10	37CNNE8YZ	NUT, NY-LOCK, 3/8-16 UNC, YZ G8	4
11	25FNNE8YZ	NUT, NY-LOCK, 1/4-28 UNF, YZ	6

42	AB385	A	BUMPER STOP ASSY, SECONDARY TO BOOM	1
21	30-M120-6000-RH	C	ASSY, BOOM REST BRACKET-G2, RH, OUTWARD FACING	1
1	20-M120-300-RH	G	WELDMENT, PRIMARY BOOM, RH, M120	1
ITEM	PART NUMBER	Rev.	Description	QTY.

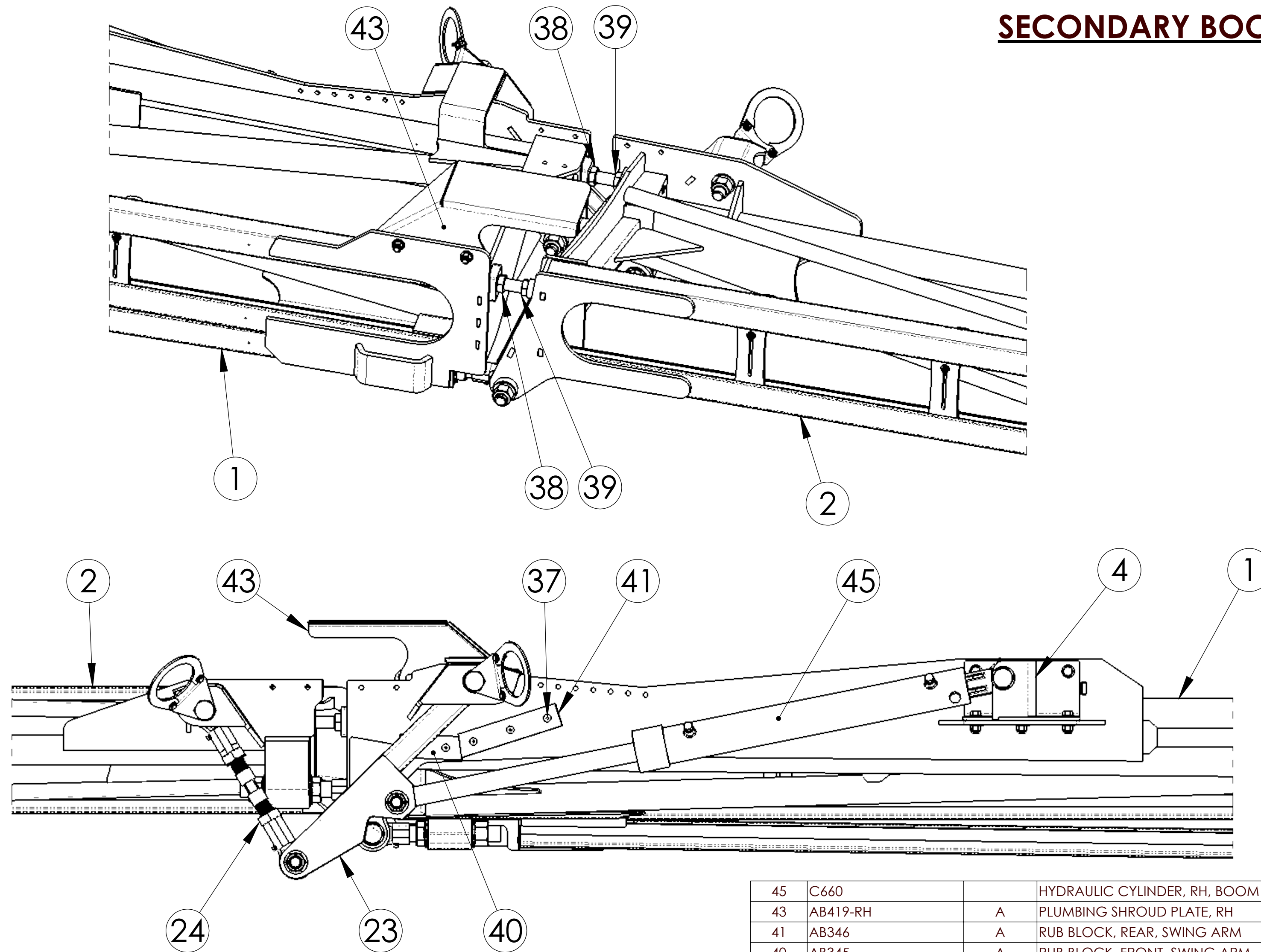
PROPRIETARY AND CONFIDENTIAL
 THE INFORMATION CONTAINED IN THIS DRAWING IS THE SOLE PROPERTY OF **SPIRIT IMPLEMENTS LLC**. ANY REPRODUCTION IN PART OR AS A WHOLE WITHOUT THE WRITTEN PERMISSION OF **SPIRIT IMPLEMENTS LLC** IS PROHIBITED.

UNLESS OTHERWISE SPECIFIED:
 DIMENSIONS ARE IN INCHES
 TOLERANCES:
 FRACTIONAL ±1/16
 ANGULAR: MACH ±0.1° BEND ±0.5°
 TWO PLACE DECIMAL ±.06
 THREE PLACE DECIMAL ±.015
 INTERPRET GEOMETRIC TOLERANCING PER:
 MATERIAL
 DO NOT SCALE DRAWING

NAME	DATE
DRAWN	
CHECKED	
ENG APPR.	
MFG APPR.	
Q.A.	
COMMENTS:	

TITLE:		
120FT BOOM, TOP ASSEMBLY, RH		
SIZE	DWG. NO.	REV
C	50-M120-500RH	D
SCALE: 1:96	WEIGHT: 963.85	SHEET 4 OF 8

SECONDARY BOOM ATTACHMENT



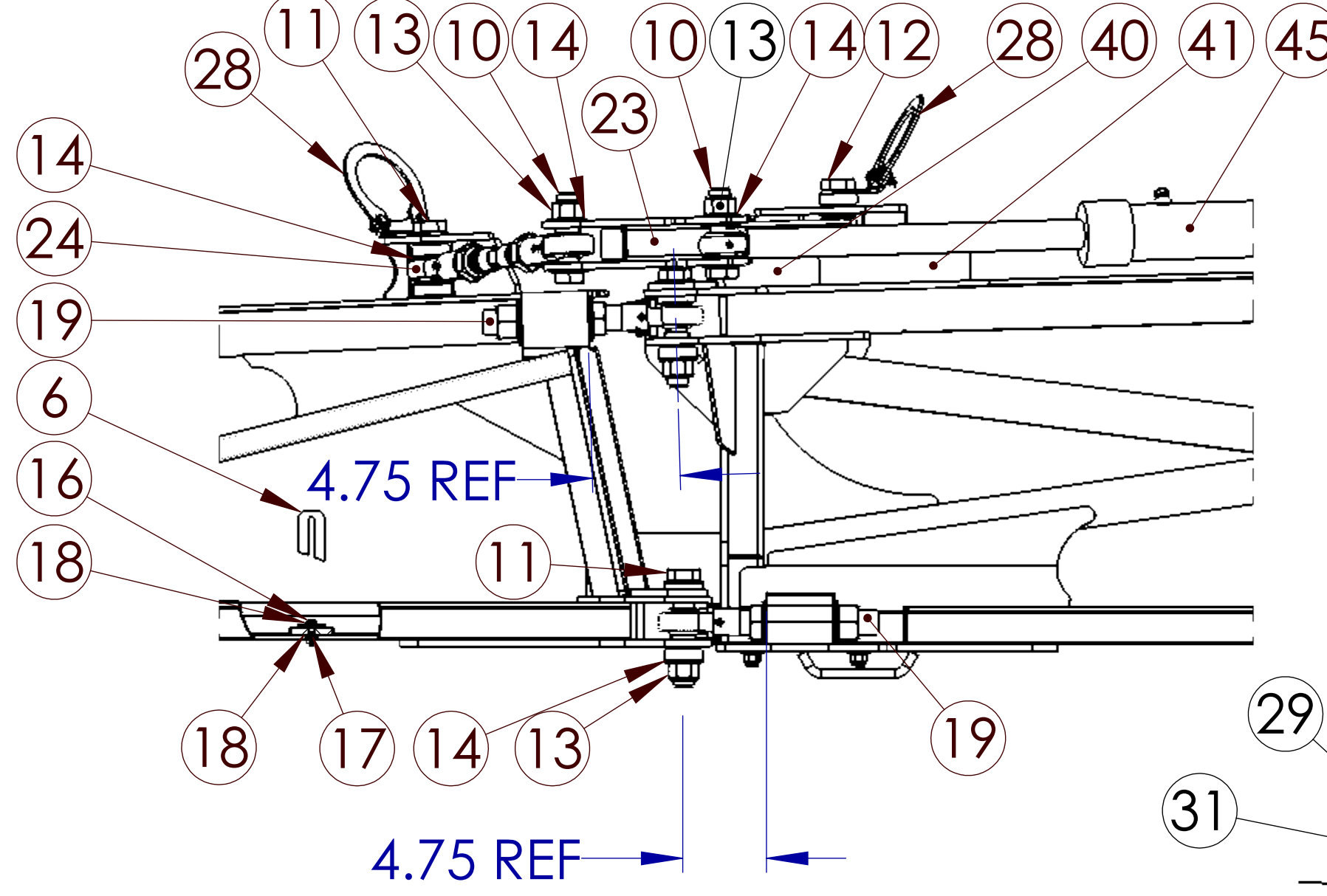
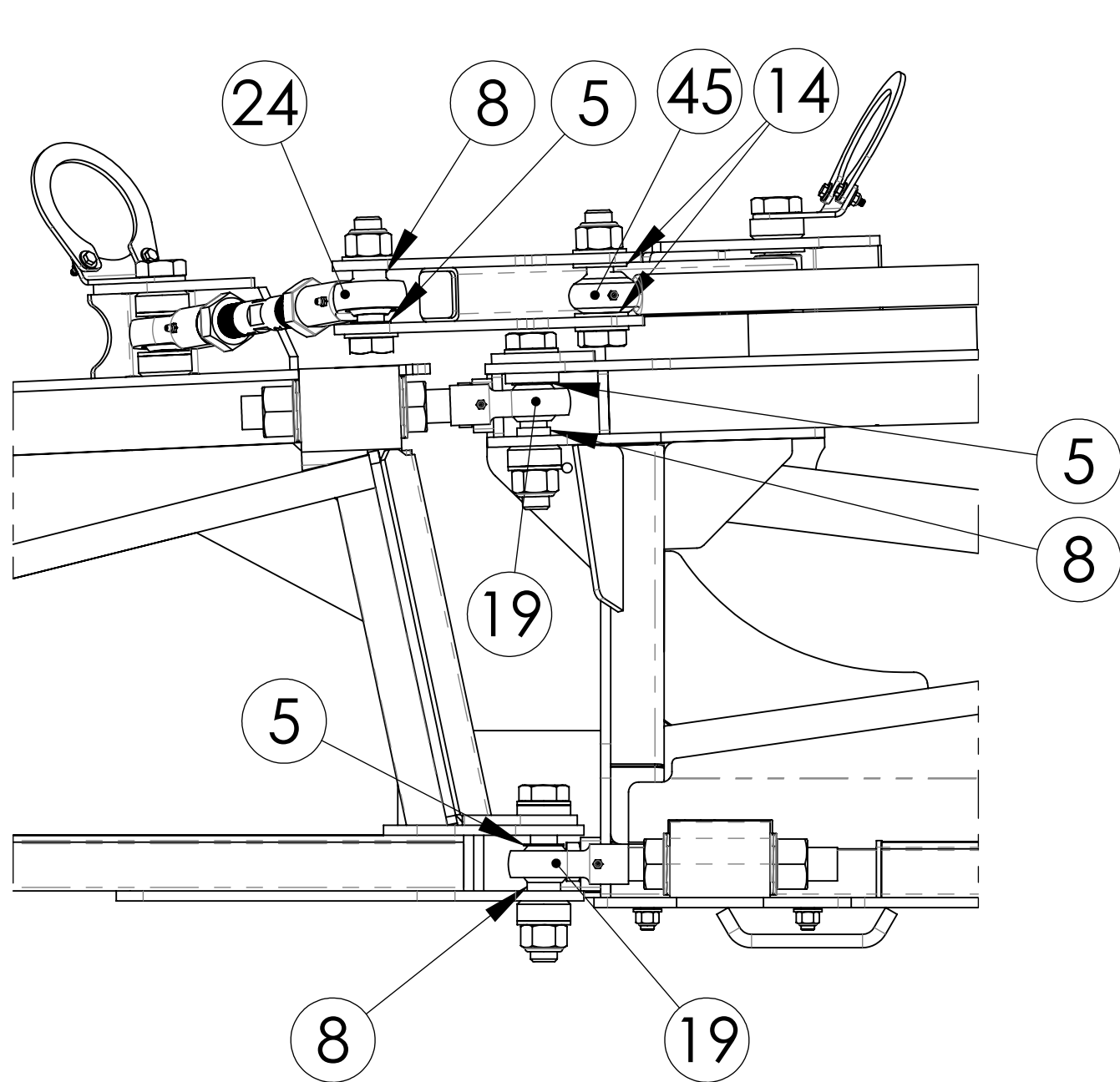
ITEM	PART NUMBER	Rev.	Description	QTY
45	C660		HYDRAULIC CYLINDER, RH, BOOM FOLD, M120	1
43	AB419-RH	A	PLUMBING SHROUD PLATE, RH	1
41	AB346	A	RUB BLOCK, REAR, SWING ARM	1
40	AB345	A	RUB BLOCK, FRONT, SWING ARM	1
39	87CNFJ8YZ		NUT, JAM, HEX, 7/8-9 UNC, GR 8 YZ	2
38	87C450BT8YZ		BOLT, 7/8-9 x 4-1/2" FT HCS YZ G8	2
37	73910		CAP SCREW, 5/16-18 x 1-1/2", FLAT SOCKET HEAD, 18-8 SS	5
24	30-M120-AB411A	B	SWING ARM CON. ROD ASSEMBLY	1
23	30-M120-AB409R	C	ASSEMBLY, CYL PIVOT ARM, RH, M120	1
4	20-M120-378-RH	A	WELDMENT, CYL PIVOT POCKET, RH, PRIMARY BOOM, M120	1
2	20-M120-2001-RH	C	WELDMENT, SECONDARY BOOM, RH, STANDARD, 6" WIDE, M120	1
1	20-M120-300-RH	G	WELDMENT, PRIMARY BOOM, RH, M120	1

PROPRIETARY AND CONFIDENTIAL
 THE INFORMATION CONTAINED IN THIS DRAWING IS THE SOLE PROPERTY OF **SPIRIT IMPLEMENTS LLC**. ANY REPRODUCTION IN PART OR AS A WHOLE WITHOUT THE WRITTEN PERMISSION OF **SPIRIT IMPLEMENTS LLC** IS PROHIBITED.

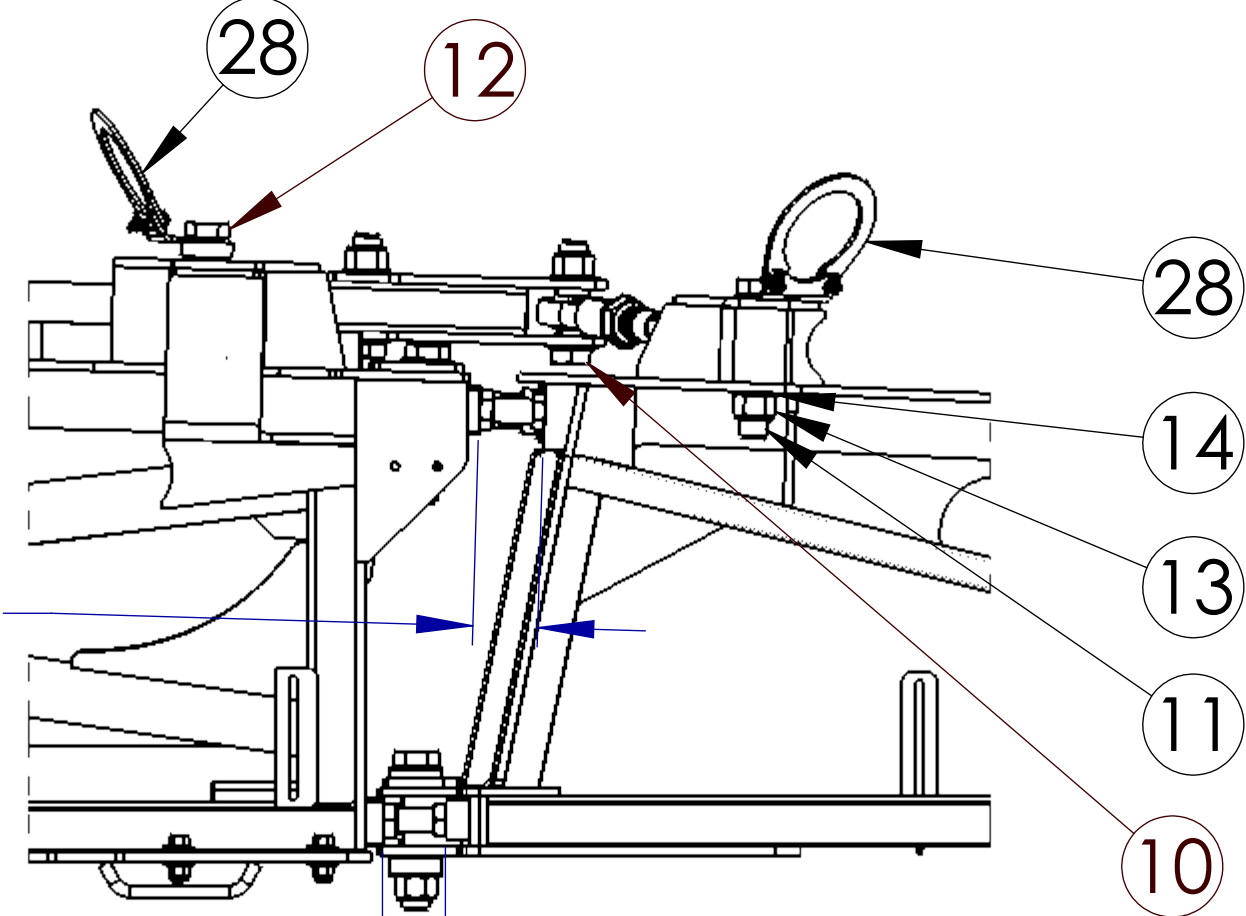
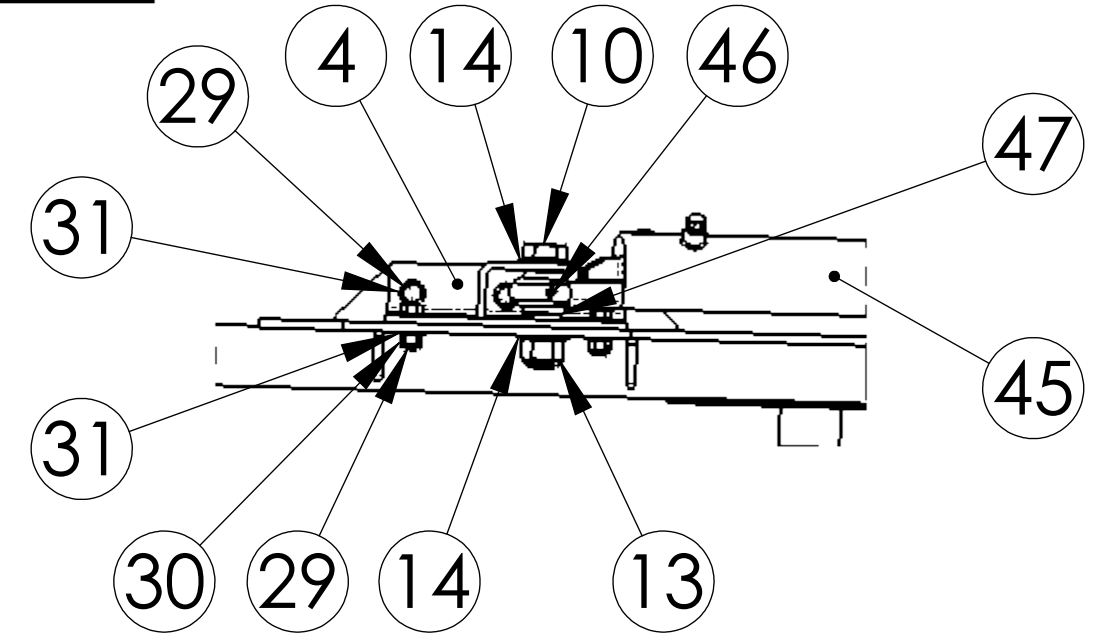
UNLESS OTHERWISE SPECIFIED:
 DIMENSIONS ARE IN INCHES
 TOLERANCES:
 FRACTIONAL ±1/16
 ANGULAR: MACH ±0.1° BEND ±0.5°
 TWO PLACE DECIMAL ±.06
 THREE PLACE DECIMAL ±.015
 INTERPRET GEOMETRIC TOLERANCING PER:
 MATERIAL
 DO NOT SCALE DRAWING

NAME	DATE
DRAWN	
CHECKED	
ENG APPR.	
MFG APPR.	
Q.A.	
COMMENTS:	

TITLE: 120FT BOOM, TOP ASSEMBLY, RH		
SIZE C	DWG. NO. 50-M120-500RH	REV D
SCALE: 1:96	WEIGHT: 963.85	SHEET 5 OF 8



**SECONDARY BOOM
ROD END ASSEMBLY**



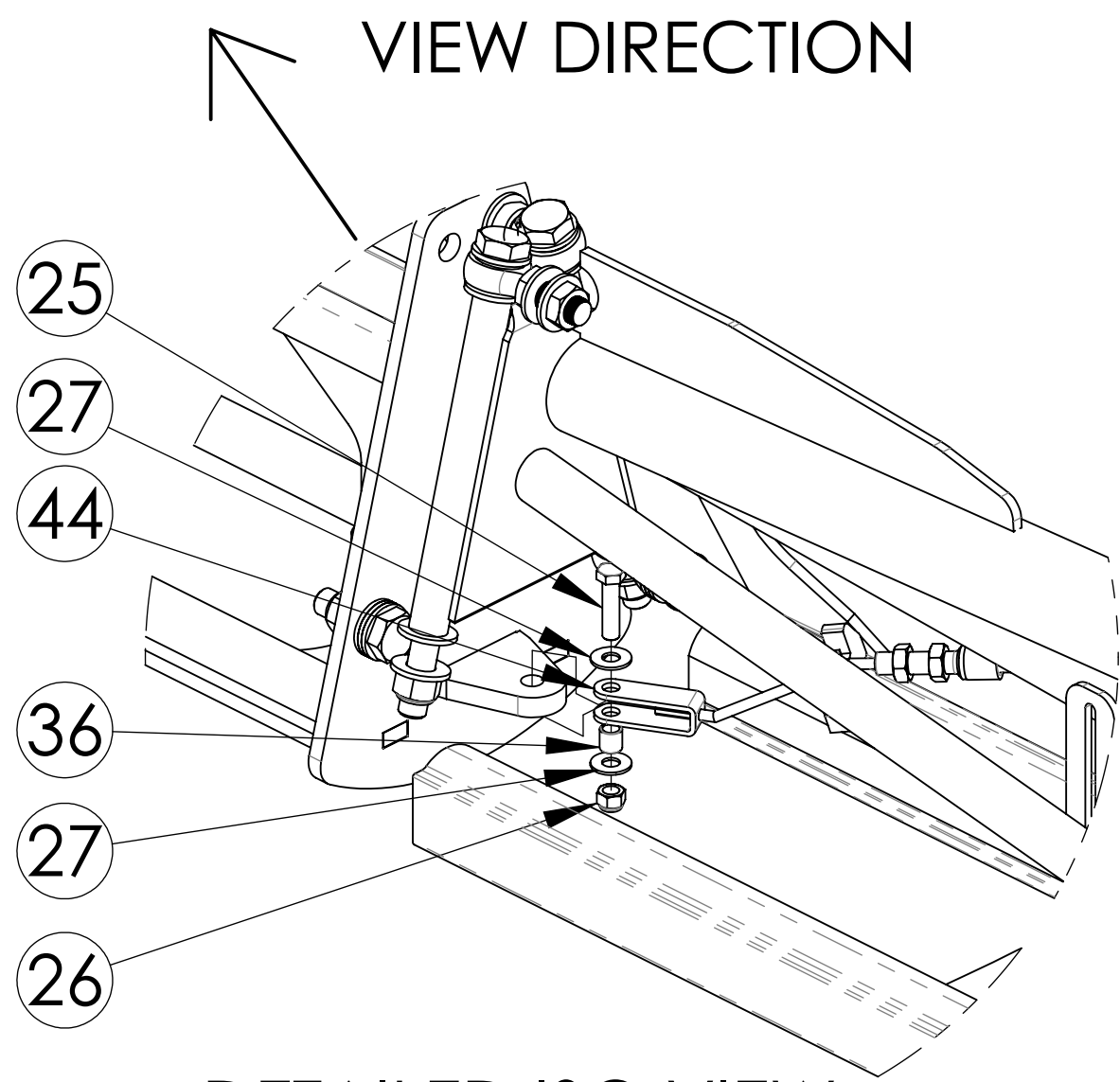
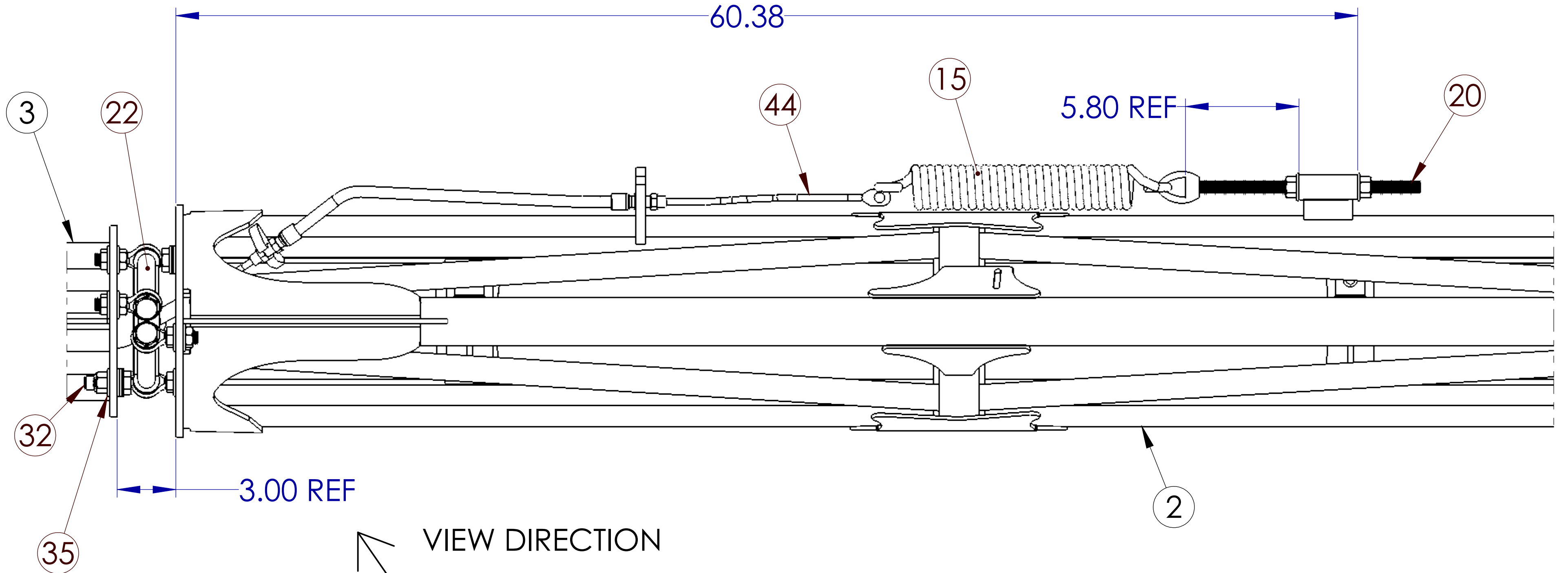
47	H-98126A706	SHIM, 1.50" OD x 1.0" ID x 0.05" THK	1
46	GF-0.25UNF-BA	GREASE FITTING, 1/4-28 UNF	2
45	C660	HYDRAULIC CYLINDER, RH, BOOM FOLD, M120	1
41	AB346	A RUB BLOCK, REAR, SWING ARM	1
40	AB345	A RUB BLOCK, FRONT, SWING ARM	1
31	50RWF8YZ	WASHER, FLAT, 1/2 SAE YZ G8	14
30	50CNNE8YZ	NUT, NY-LOCK, 1/2-13 UNC, YZ G8	7
29	50C150HCS8YZ	BOLT, 1/2-13 x 1-1/2" x 1.25 HCS YZ G8	7
28	50-BA-9000	A HOSE LOOP KIT, 1" TO 1-1/4" MOUNT, 4"	2
24	30-M120-AB411A	B SWING ARM CON. ROD ASSEMBLY	1
23	30-M120-AB409R	C ASSEMBLY, CYL PIVOT ARM, RH, M120	1
19	30-BA-6002	B HS ROD END ASSY, 1.0 ID X 1-1/4"-12 THD ROD	2
18	25RWF8YZ	WASHER, FLAT, 1/4 SAE GR8 YZ	26
17	25CNNE8YZ	NUT, NY-LOCK, 1/4-20 UNC, YZ	13
16	25C125HCS8YZ	- BOLT, 1/4-20 UNC x 1-1/4" x .75" GR8 YZ	13
14	10ORWF8YZ	WASHER, FLAT, 1" SAE YZ G8	25
13	100CNNE8YZ	NUT, NY-LOCK, 1"-8 UNC, YZ G8	8
12	100C700HCS8YZ	BOLT, 1"-8 x 7 x 2.25 HCS 8 YZ	1
11	100C600HCS8YZ	BOLT, 1"-8 x 6 x 2.25 HCS YZ G8	3
10	100C450HCS8YZ	BOLT, 1"-8 x 4-1/2" x 2.25 HCS YZ G8	3
6	10-M120-394	A PLATE, BRACKET, PLUMBING MOUNT, ADJUSTABLE, STANDARD	13
4	20-M120-378-RH	A WELDMENT, CYL PIVOT POCKET, RH, PRIMARY BOOM, M120	1
1	20-M120-300-RH	G WELDMENT, PRIMARY BOOM, RH, M120	1
ITEM	PART NUMBER	Rev. Description	QTY.

PROPRIETARY AND CONFIDENTIAL
THE INFORMATION CONTAINED IN THIS DRAWING IS THE SOLE PROPERTY OF SPIRIT IMPLEMENTS LLC. ANY REPRODUCTION IN PART OR AS A WHOLE WITHOUT THE WRITTEN PERMISSION OF SPIRIT IMPLEMENTS LLC IS PROHIBITED.

UNLESS OTHERWISE SPECIFIED:		NAME	DATE
DIMENSIONS ARE IN INCHES		DRAWN	
TOLERANCES:		CHECKED	
FRACTIONAL ±1/16		ENG APPR.	
ANGULAR: MACH ±0.1° BEND ±0.5°		MFG APPR.	
TWO PLACE DECIMAL ±.06		Q.A.	
THREE PLACE DECIMAL ±.015		COMMENTS:	
INTERPRET GEOMETRIC TOLERANCING PER:			
MATERIAL			
DO NOT SCALE DRAWING			

TITLE:		
120FT BOOM, TOP ASSEMBLY, RH		
SIZE	DWG. NO.	REV
C	50-M120-500RH	D
SCALE: 1:48	WEIGHT: 963.85	SHEET 6 OF 8

BREAKAWAY ASSEMBLY



ITEM	PART NUMBER	Rev.	Description	QTY.
44	C47-002-38		CABLE ASSEMBLY, BREAKAWAY TO SPRING	1
36	6381K45		SLEEVE BEARING, CAST BRONZE, .50" O.D. X .38" ID X .50" SHAFT	1
32	62C200HCS8YZ		BOLT, 5/8-11 x 2" x 1.50 HCS GR8 YZ	2
27	37RWF8YZ		WASHER, FLAT, 3/8 SAE G8 YZ	2
26	37CNNE8YZ		NUT, NY-LOCK, 3/8-16 UNC, YZ G8	1
25	37C150HCS8YZ	-	BOLT, 3/8-16 x 1-1/2" x 1.0 HCS GR8 YZ	1
22	30-M120-AB101	C	"A" FRAME ASSEMBLY WITH ROD ENDS	1
20	30-BA-6005	-	THREADED ROD ASSEMBLY, BREAKAWAY SPRING, BLACK PAINT	1
15	160939		BREAKAWAY SPRING, 2.0" OD x .38" DIA WIRE	1
3	20-M120-1000	C	WELDMENT, BREAKAWAY, STANDARD, (106") M120	1
2	20-M120-2001-RH	C	WELDMENT, SECONDARY BOOM, RH, STANDARD, 6" WIDE, M120	1

PROPRIETARY AND CONFIDENTIAL
 THE INFORMATION CONTAINED IN THIS DRAWING IS THE SOLE PROPERTY OF **SPIRIT IMPLEMENTS LLC**. ANY REPRODUCTION IN PART OR AS A WHOLE WITHOUT THE WRITTEN PERMISSION OF **SPIRIT IMPLEMENTS LLC** IS PROHIBITED.

UNLESS OTHERWISE SPECIFIED: DIMENSIONS ARE IN INCHES TOLERANCES: FRACTIONAL ±1/16 ANGULAR: MACH ±0.1° BEND ±0.5° TWO PLACE DECIMAL ±.06 THREE PLACE DECIMAL ±.015 INTERPRET GEOMETRIC TOLERANCING PER: MATERIAL		NAME	DATE
DO NOT SCALE DRAWING		DRAWN	
		CHECKED	
		ENG APPR.	
		MFG APPR.	
		Q.A.	
		COMMENTS:	

TITLE: 120FT BOOM, TOP ASSEMBLY, RH		
SIZE C	DWG. NO. 50-M120-500RH	REV D
SCALE: 1:48	WEIGHT: 963.85	SHEET 7 OF 8

JD ADDENDUM FOR CENTER RACK

ITEMS NEEDED TO ADD TO A JOHN DEERE CENTER RACK

CR SPRINGS (STD. BREAKAWAY SPRING) - QTY = 8

B323 HYDRAULIC CYLINDER (TILT) - QTY = 2

- * INSTALL .060" ORIFICE IN ROD END PORT OF CYLINDER
- * INSTALL .090" ORIFICE IN BUTT END PORT OF CYLINDER

N084 HYDRAULIC CYLINDER (SWING) - QTY=1

- *INSTALL .028" ORIFICE IN BOTH PORTS OF CYLINDER

PROPRIETARY AND CONFIDENTIAL
 THE INFORMATION CONTAINED IN THIS DRAWING IS THE SOLE PROPERTY OF **SPIRIT IMPLEMENTS LLC**. ANY REPRODUCTION IN PART OR AS A WHOLE WITHOUT THE WRITTEN PERMISSION OF **SPIRIT IMPLEMENTS LLC** IS PROHIBITED.

UNLESS OTHERWISE SPECIFIED:		NAME	DATE	TITLE: 120FT BOOM, TOP ASSEMBLY, RH
DIMENSIONS ARE IN INCHES		DRAWN		
TOLERANCES: FRACTIONAL ±1/16		CHECKED		
ANGULAR: MACH ±0.1° BEND ±0.5°		ENG APPR.		
TWO PLACE DECIMAL ±.06		MFG APPR.		SIZE DWG. NO. REV C 50-M120-500RH D
THREE PLACE DECIMAL ±.015		Q.A.		
INTERPRET GEOMETRIC TOLERANCING PER:		COMMENTS:		SCALE: 1:96 WEIGHT: 963.85 SHEET 8 OF 8
MATERIAL				
DO NOT SCALE DRAWING				